

September 2015, Kottlingbrunn/Austria

## PRESS RELEASE

WITTMANN BATTENFELD at the Fakuma 2015

### **WITTMANN 4.0 – the WITTMANN group’s answer to Industrie 4.0**

***On the way to Industrie 4.0, WITTMANN 4.0 provides an important element for integration and will be demonstrated at the Fakuma from 13 to 17 October on the injection molding machines exhibited there in hall B1, booth 1204.***

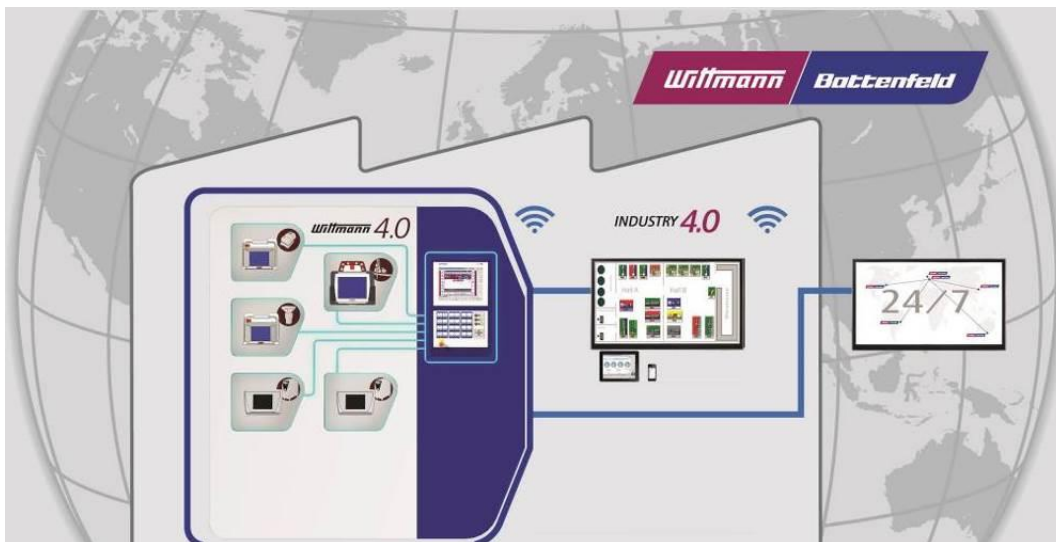
Networking has been an important topic for the WITTMANN group ever since its takeover of BATTENFELD Kunststofftechnik in 2008. The integration of WITTMANN robots into the injection molding machines’ UNILOG control system was already implemented in the takeover year. Following successful integration of the robots, the WITTMANN group started integrating the peripheral equipment step by step as well. At the Fakuma 2014, the integration of temperature controllers in addition to robots could already be shown. This was followed at the end of the year by adding the FLOWCON flow controllers and GRAVIMAX gravimetric blenders, whose integration was demonstrated for the first time at the NPE in Orlando.

Thus, via the machine’s B6<sup>P</sup> control system, several machines as well as robots and peripherals connected to them can be linked together and operated via the uniform Windows user interface, which enables interaction between the individual appliances. In this way, the entire manufacturing process, including material feeding and blending, temperature control, automation and injection molding can be optimally coordinated and tracked. Another important point is having all parameter settings, automation processes and formulations centrally recorded in a mold catalog and distributed from there to the correct appliances when a mold change takes place. This enables significant reductions in setup times and the resulting costs. Just as important is the central recording of error signals and machine statuses of all appliances linked together under WITTMANN 4.0.

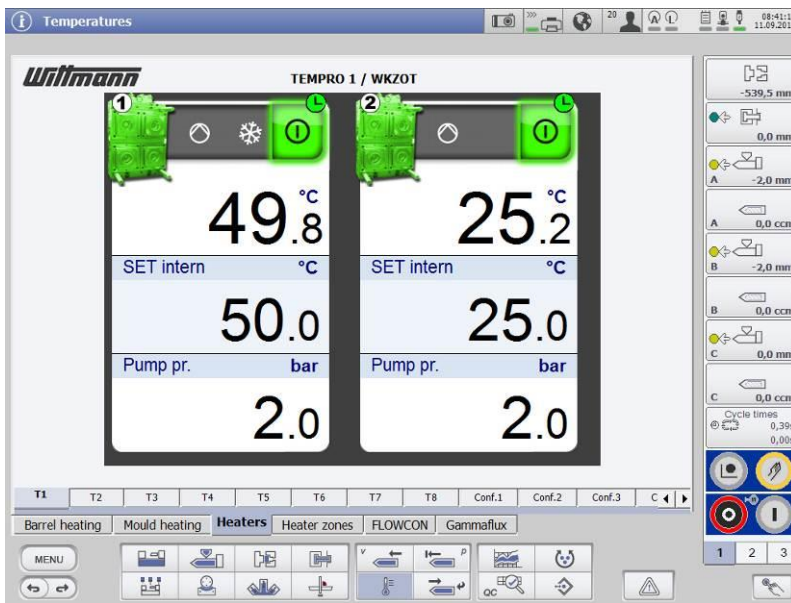
WITTMANN 4.0 transforms the injection molding machine into a control terminal for robots, peripherals as well as superordinate systems such as the “authentig” MES system from T.I.G. According to the motto “plug and produce” WITTMANN 4.0 allows dynamic plug-in and plug-out of the appliances mentioned even while the machine is

running. Thanks to the possibility of supplying everything from a single source, which the WITTMANN can provide, WITTMANN BATTENFELD offers the implementation of its 4.0 solution as a clear advantage.

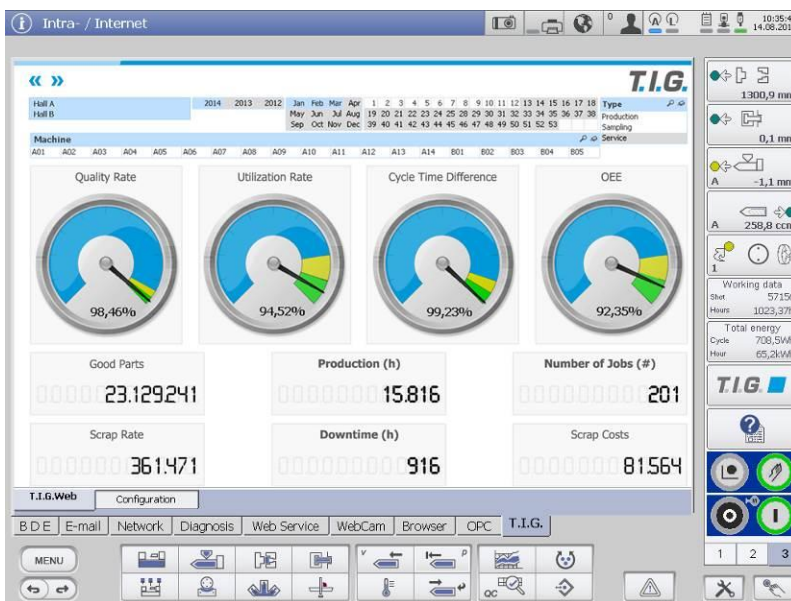
In addition to WITTMANN 4.0, WITTMANN has been providing an app since the end of 2014 to monitor the status of injection molding machines and robots. With the help of the WiBa QuickLook app, it is possible to check the status of injection molding machines and robots simply and comfortably with a Smartphone within the company's WLAN. The QuickLook app links up with the most recent software versions of WITTMANN R8.3 robots and WITTMANN BATTENFELD Unilog B6<sup>P</sup> control systems. In this way, WiBa QuickLook enables quick and easy viewing of the process data and the status of the most important appliances operating in a production cell.



**Fig. 1:** Schematic diagram of WITTMANN 4.0



**Fig. 2:** Injection molding machine as a control terminal for TEMPRO plus D temperature controllers



**Fig. 3:** Injection molding machine as an MES control terminal to check the most important parameters



**Fig. 4:** The WiBa QuickLook app for simple status checks of machines and robots

## **The WITTMANN Group**

The WITTMANN Group is a worldwide leader in the manufacturing of injection molding machines, robots and peripheral equipment for the plastics industry. Headquartered in Vienna/Austria, the WITTMANN Group consists of two main divisions, WITTMANN BATTENFELD and WITTMANN, which operate 10 production facilities in 7 countries, including 30 direct subsidiary offices located in all major plastics markets around the world.

WITTMANN BATTENFELD focuses on independent market growth in the manufacturing of state-of-the art injection molding machines and process technology, providing a modern and comprehensive range of machinery in a modular design that meets the actual and future requirements of the plastic injection molding market.

WITTMANN's product range includes robots and automation systems, material handling systems, dryers, gravimetric and volumetric blenders, granulators, mold temperature controllers and chillers. With this comprehensive range of peripheral equipment, WITTMANN can provide plastics processors with solutions that cover all production requirements, ranging from autonomous work cells to integrated plant-wide systems.

The syndication of the WITTMANN Group has led to connectivity between all product lines, providing the advantage plastics processors have been looking for in terms of a seamless integration of injection molding machines, automation and auxiliary equipment – all occurring at a progressive rate.

### **Contact:**

#### **WITTMANN BATTENFELD GmbH & Co.KG**

Werner-Battenfeld-Strasse 1

D-58540 Meinerzhagen

Tel.: +49 2354 72-0

Fax: +49 2354 72-485

[info@wittmann-group.com](mailto:info@wittmann-group.com)

[www.wittmann-group.com](http://www.wittmann-group.com)

#### **WITTMANN BATTENFELD GmbH**

Wiener Neustädter Strasse 81

A-2542 Kottlingbrunn

Tel.: +43 2252 404-1400

Fax: +43 2252 404-991400

[gabriele.hopf@wittmann-group.com](mailto:gabriele.hopf@wittmann-group.com)

[www.wittmann-group.com](http://www.wittmann-group.com)